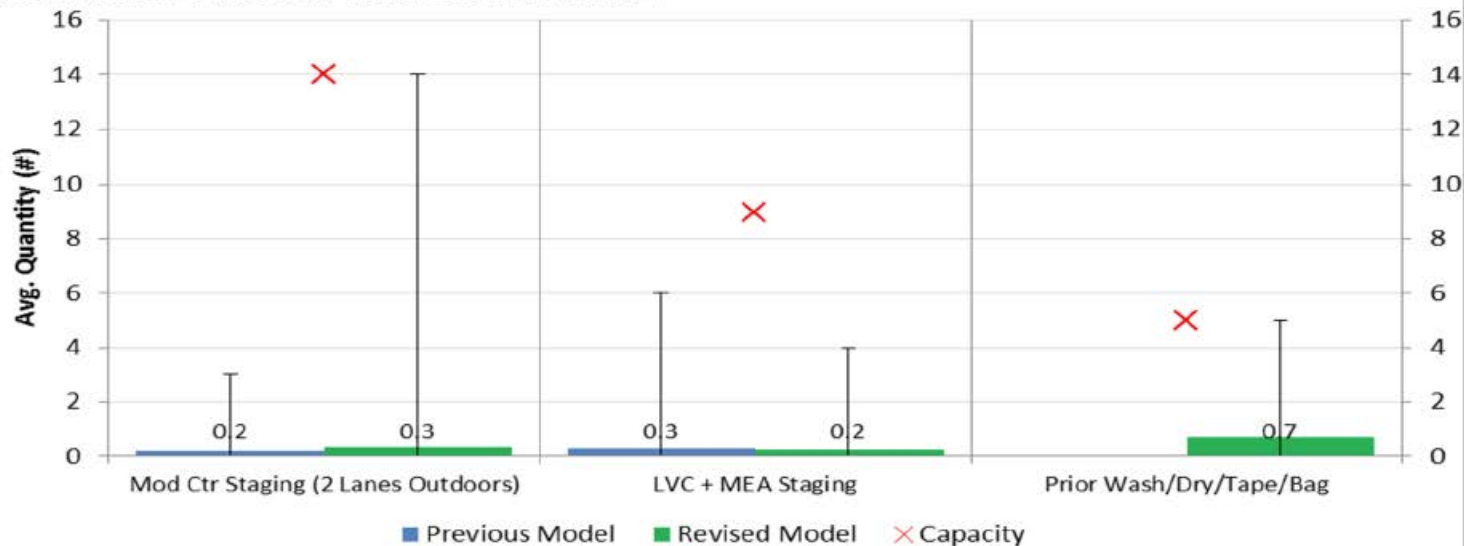


Simulation Results Summary

ACCUMULATOR PERFORMANCE

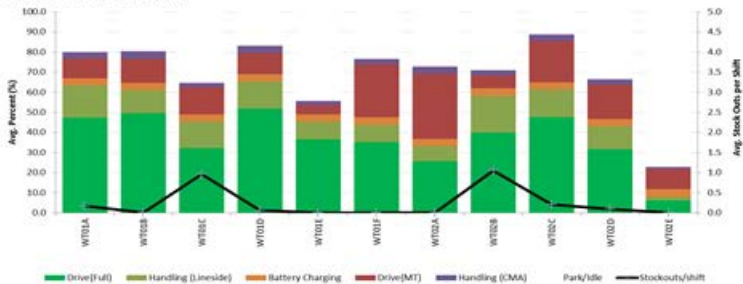


Observations

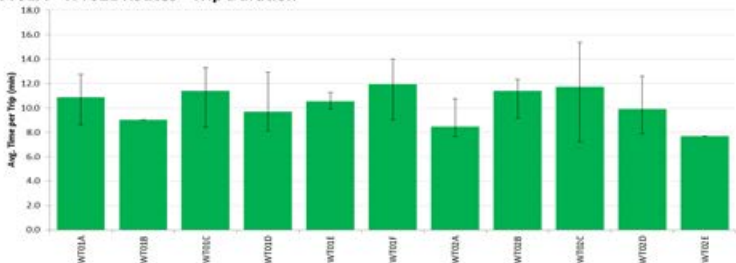
- With the reduction in amount of accumulation for P-Units in the MOD area, the MOD Ctr Staging (2 Lanes Outdoor) accumulator reached the capacity (14 units). However, the accumulator on average did not change significantly.
- The LVC/MEA Staging was not significantly effected on average. However, the maximum value achieved is slightly lower compared to the previous model (6 to 4 units).

Below is a summary of the tuggers and small lot routes.

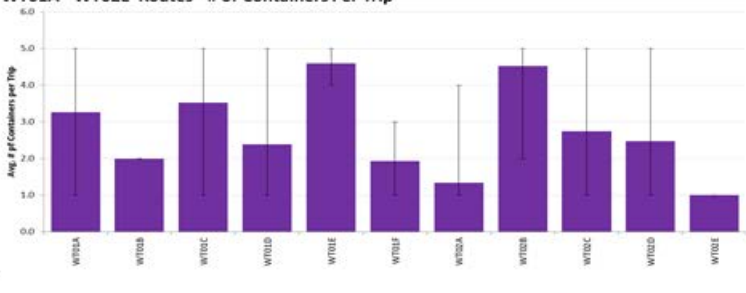
WT01A - WT02E Routes



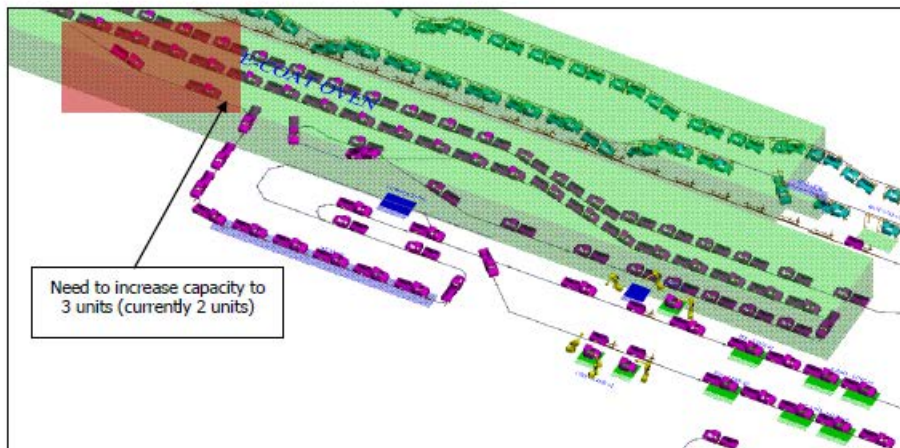
WT01A - WT02E Routes - Trip Duration



WT01A - WT02E Routes - # of Containers Per Trip



Stop Prior to Manual Seal Constraint



Stop Prior to ELPO Oven Constraint

